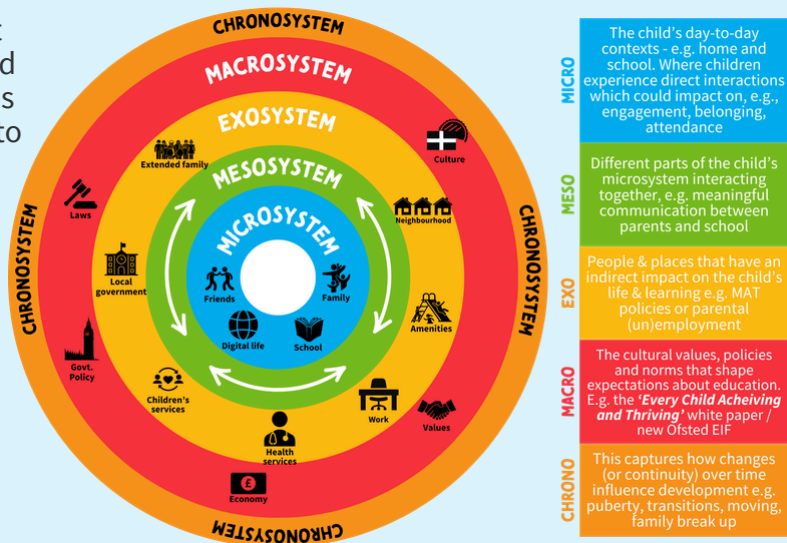


# A BRILLIANT ME IN ACTION ONE PAGE GUIDE TO...

## BRONFENBRENNER'S ECOLOGICAL SYSTEMS MODEL

Bronfenbrenner's model explains how a child's development doesn't happen in a vacuum. It is influenced by multiple interconnected systems—from their family and classroom to broader cultural and political contexts. It considers how these systems interact and shape outcomes over time.

**WHAT?** It highlights how education is not something that belongs to the school alone, but to a network of relationships, structures and institutions. A child's learning is best shaped when these multiple systems act together.



This is reflected in the *Every Child Achieving and Thriving* white paper\*. There is an emphasis not just on schools' role as educators but also as 'anchors' within the community and therefore a powerful setting to help families access support and services through strong collaboration between schools and other partners. I.e. the quality of the interactions at the *microsystem* and the *mesosystem* levels.

**WHY?** Bronfenbrenner helps remind us that children's development is shaped by the relationships and systems around them. Schools are a vital part of this ecology, but children thrive best when families, schools, communities and services work together.

It reminds schools that SEL isn't just individual — it's systemic. We must understand and support the contexts that shape children's lives.

- SEL?**
- Strengthen school-home partnerships.
  - Build safe, inclusive micro-systems within the classroom.
  - Consider wider barriers to participation and wellbeing.
  - Plan SEL at whole-school, classroom, and family levels.

- FIND OUT MORE**
- [Bronfenbrenner on the HSK website](#)
  - [An introduction to resilience: background / research](#)
  - [Boingboing approach to resilience](#)
  - [CASEL approach to SEL](#) (introduction in the BMinA resource)



- SEE ALSO**
- Boingboing Resilience Framework
  - Parent Engagement Framework
  - CASEL

Bronfenbrenner informs the Boingboing approach to resilience and is a foundation for the CASEL approach to SEL  
 \*'Every Child Achieving and Thriving', DfE, February 2026